

CRAWFORD COLLEGE OF ART & DESIGN

2023



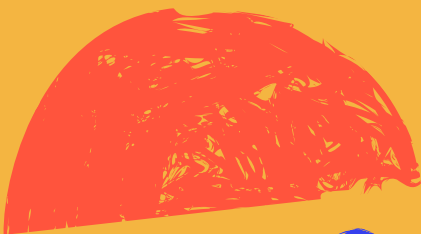
PORTFOLIO
GUIDELINES.



MTU

Coláiste Ealaíne is Deartha Crawford
Crawford College of Art and Design

<https://crawford.mtu.ie>



MTU* 

Crawford


Undergra

duate 

Programmes

COURSES

 BA (Honours) in Contemporary Applied Art
(Ceramics, Glass, Textiles) MT 820

 BA (Honours) in Fine Art MT 821

 BA (Honours) in Visual Communications MT 823

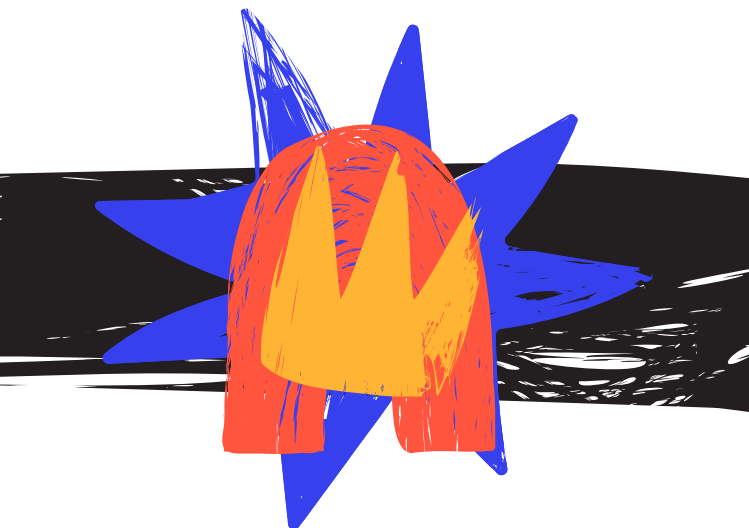


The portfolio is your opportunity to show what interests and excites you visually; it should show your ability and potential to engage in a challenging and creative contemporary art and design practice. If you have an inquisitive mind and want to explore your creativity, then the Crawford Degree Programmes are for you.

There is no 'standard' portfolio but these are indications of what will be looked for:

- Make it exciting so your portfolio reflects your interest and enthusiasm for the chosen course as a prospective art and design student
- Evidence of drawing and painting are essential and/or photography and video should be demonstrated through both observational and imaginative work.
- Don't leave out large scale or 3D work; however it is sufficient to present this by photographing the objects from a variety of view-points and including some indication of scale if possible.
- Sketchbooks and personal visual diaries are vital since they give an idea of how you inform yourself, how you generate ideas and your approach to researching and developing them.
- It is important to organise and present your portfolio clearly. Try to be selective, judge what best displays your interests, abilities and skills, then arrange it in a clear and coherent manner - don't put everything in. Remember we are looking for quality, not quantity.





- For a place on courses MT 820, MT 821, MT 822 and MT 823, offers are made based on portfolio results to applicants who meet academic minimum entry requirement, i.e. a Leaving Certificate in six subjects (H5 in two subjects, and O6/H7 in four other subjects). One of the subjects must be English or Irish.
- Alternatively, applicants should have any QQI/FETAC major award comprising 8 subjects with 3 Distinctions.
- Applicants must present a portfolio of work for assessment. The portfolio will be marked, with a maximum of 600 marks being available for it. A minimum of 240 (40%) marks must be obtained in the Portfolio Assessment in order for an applicant to be eligible for the course.
- Applicants should apply through the CAO by 1st February, you will be able to submit your digital portfolio for assessment anytime from 1st February until mid March.
- The marks allocated to the portfolio will be communicated to the CAO and emailed to the applicant by the end of May. When the Leaving Certificate results become available, the CAO will make offers in the usual manner.



PORTFOLIO GUIDELINES

In order to be considered for a place on the courses MT820, MT821 and MT823, applicants must satisfy the minimum academic requirements. Please see Areas of Study. All applicants are to submit a portfolio in a digital format.



DIGITAL PORTFOLIO

SUBMISSION

- You will need your CAO number to begin your submission. All courses which require portfolio assessment must have been included on your CAO application by February 1st.
- Your digital portfolio submission should have a minimum of 10 pieces and a maximum of 25 pieces uploaded to your submission in a pdf format.
- You will find out how to create and submit your Digital Portfolio on the Crawford website.
- Film + video files must be submitted via a url: YouTube, Vimeo, etc. Please make sure that any online videos are public and password free for assessing. • If you have any queries, please email crawford.portfolio@mtu.ie



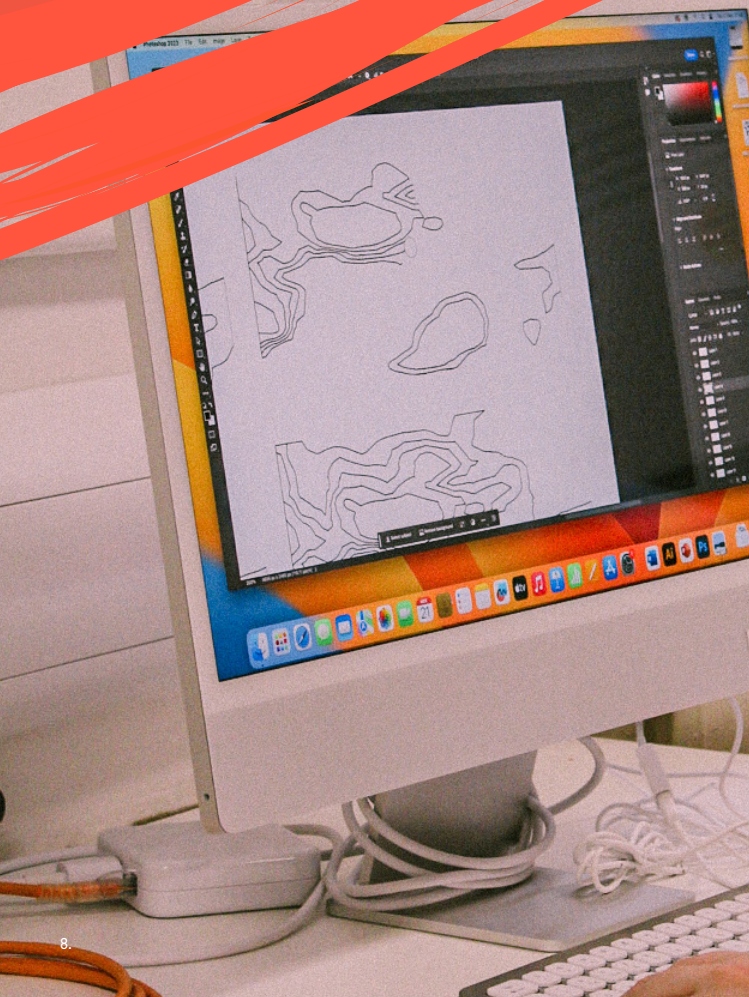
MTU

Coláiste Ealaíne is Deartha Crawford
Crawford College of Art and Design

Art Portfolio Preparation Courses

We offer Art Portfolio Preparation Courses on Saturdays during the school year, as well as a short, intensive course during the summer.

For further information on these courses, visit <http://crawford.mtu.ie> or email crawford.enquiries@mtu.ie







MTU

Coláiste Ealaíne is Deartha Crawford
Crawford College of Art and Design

